

Masonry & Slate

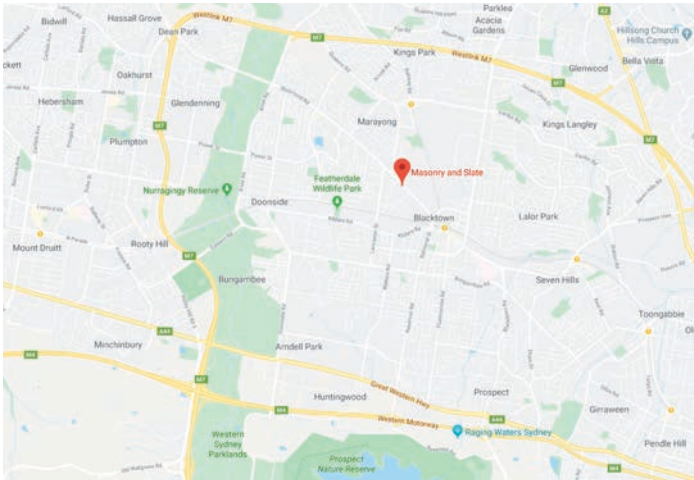


RETAINING WALLS | PAVING | NATURAL STONE
WATER FEATURES & MORE

PRODUCT CATALOGUE

VISIT OUR SHOWROOM FOR SOME IDEAS AND INSPIRATION

Drop into our **Blacktown** showroom at **98 Richmond Road**, and see the difference. We are only minutes from the M4 and the M7 in Sydney.



Google and the Google logo are registered trademarks of Google LLC, used with permission.

NOTES

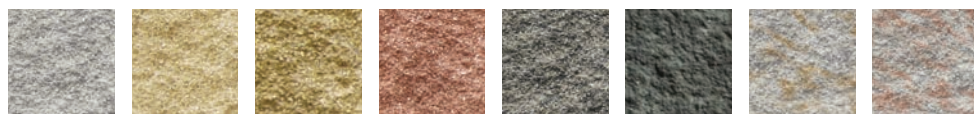


TASMAN

This quality, near vertical retaining wall system is a great do it yourself solution. No concrete footings are needed and they are flexible. You can achieve anything from 90° corners, steps, straight and even curved walls.

DESCRIPTION	CODE	LENGTH (mm)	WIDTH (mm)	HEIGHT (mm)	QTY	PALLET QTY
Tasman Full Block	225-01	390	225	200	13 /m ²	75
Tasman Full Corner	225-34	145	340	200		
Tasman Half Corner	225-14	145	235	200		
Tasman Full Cap	60-240	390	240	60	2.5 /m	120
Tasman Half Cap	60-230	200	225	60	5 /m	300

AVAILABLE COLOURS



Opal White Appin Stone Penrose Oakdale Bushrock Charcoal Yellow Rock Red Rock



Tasman Wall Block



Tasman Full Corner



Tasman Half Corner



Tasman Full Cap



Tasman Half Cap

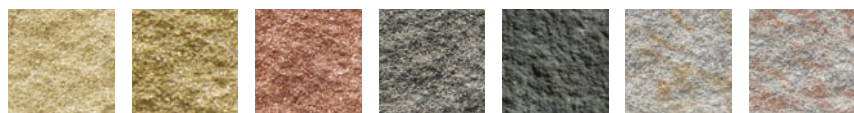


NORFOLK

This economic, low maintenance retaining wall system is a great do it yourself solution. No mortar is required and is structurally sound. You can achieve both straight and curved walls.

DESCRIPTION	CODE	LENGTH (mm)	WIDTH (mm)	HEIGHT (mm)	QTY	PALLET QTY
Norfolk Block	020-144	390	190	180	14 /m ²	90
Norfolk Capping Block	020-146	390	190	180	2.56 /m	90

AVAILABLE COLOURS



Appin Stone Penrose Oakdale Bushrock Charcoal Yellow Rock Red Rock



Norfolk Block



Norfolk Capping Block



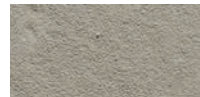
WET CAST CONCRETE Hewnstone

This range is in the 400 x 400 x 40mm size. The Hewnstone range is available in two finishes – smooth and course. Tile thickness (20mm) is also possible. Any colour is available for any of our paving range. Matching bullnose is available for both finishes as well as 'square edge' bullnose.

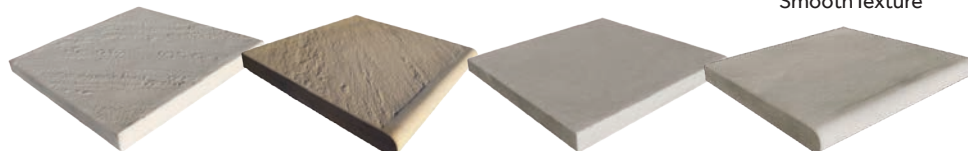
DESCRIPTION	CODE	LENGTH (mm)	WIDTH (mm)	THICK (mm)
Hewnstone Course Paver		400	400	40
Hewnstone Course Bullnose		400	400	40
Hewnstone Smooth Paver		400	400	40
Hewnstone Smooth Bullnose		400	400	40



Course Texture



Smooth Texture



Course Paver

Course Bullnose

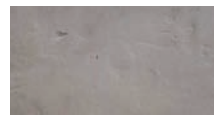
Smooth Paver

Smooth Bullnose

WET CAST CONCRETE Courtstone

The Courtstone paver has cobbled edges for the antique appearance. It is only available in the 580 x 400 x 40mm size (tile thickness is possible).

DESCRIPTION	CODE	LENGTH (mm)	WIDTH (mm)	THICK (mm)
Courtstone Paver		580	400	40
Courtstone Bullnose		580	400	40



Courtstone Texture



Courtstone Paver

Courtstone Bullnose



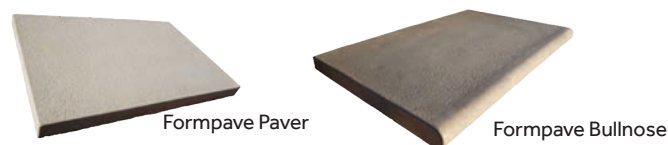
WET CAST CONCRETE Formpave

Formpave is available in 600 x 400 x 40mm. It has a matching bullnose for around pools or stairs.

DESCRIPTION	CODE	LENGTH (mm)	WIDTH (mm)	THICK (mm)
Formpave Paver		580	400	40
Formpave Bullnose		600	400	40



Courtstone Texture



Formpave Paver

Formpave Bullnose



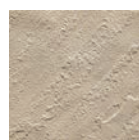
WET CAST CONCRETE Colours



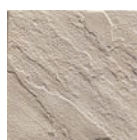
Pearl



Beach



Ivory



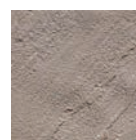
Limestone



Sandstone



Creamstone



Ivory Tan



Sage

WET CAST CONCRETE Classic

The Classic is available in 500 x 500 x 35mm with a matching bullnose the same size at 500 x 500 x 35mm. The texture is subtle and looks relatively smooth from a distance.

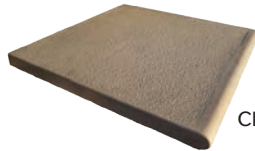
DESCRIPTION	CODE	LENGTH (mm)	WIDTH (mm)	THICK (mm)
Classic Paver		500	500	35
Classic Bullnose		500	500	35



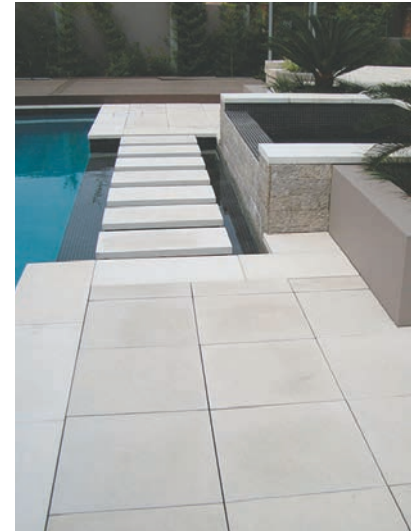
Classic Texture



Classic Paver



Classic Bullnose



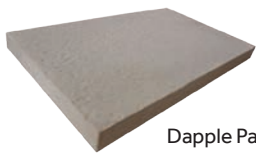
WET CAST CONCRETE Dapple

The Dapple finish is available in two sizes – 500 x 500 x 35mm and 500 x 350 x 40mm. The bullnose is available in 500 x 500 x 40mm.

DESCRIPTION	CODE	LENGTH (mm)	WIDTH (mm)	THICK (mm)
Dapple Paver 35		500	500	35
Dapple Paver 40		500	500	40



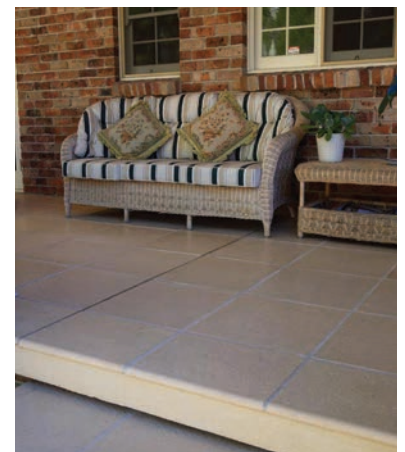
Dapple Texture



Dapple Paver



Dapple Bullnose



WET CAST CONCRETE Gangsawn

The Gangsawn is available in 450 x 450 x 40mm size (tile thickness is also available). The matching bullnose is 450 x 350 x 40mm with the bullnose on the 450mm side.

DESCRIPTION	CODE	LENGTH (mm)	WIDTH (mm)	THICK (mm)
Gangsawn Paver		500	500	35
Gangsawn Bullnose		500	500	35



Gangsawn Texture



Gangsawn Paver



Gangsawn Bullnose

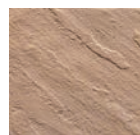
WET CAST CONCRETE Colours



Silvermist



Coffee



Sunset



Honeycomb



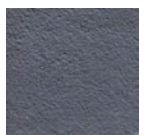
Terracotta



Bush



Suede



Charcoal

COLOURSTONE Easy Pave

Easy Pave pavers are suitable for driveway applications for domestic vehicles, landscape terraces and footpaths.

DESCRIPTION	CODE	LENGTH (mm)	WIDTH (mm)	THICK (mm)	WEIGHT (Kg)	PALLET QTY
Easy Pave	50-33	190	190	40	50	30

AVAILABLE COLOURS



Appin Stone



Oakdale



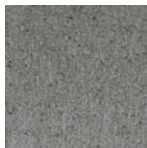
Robertson



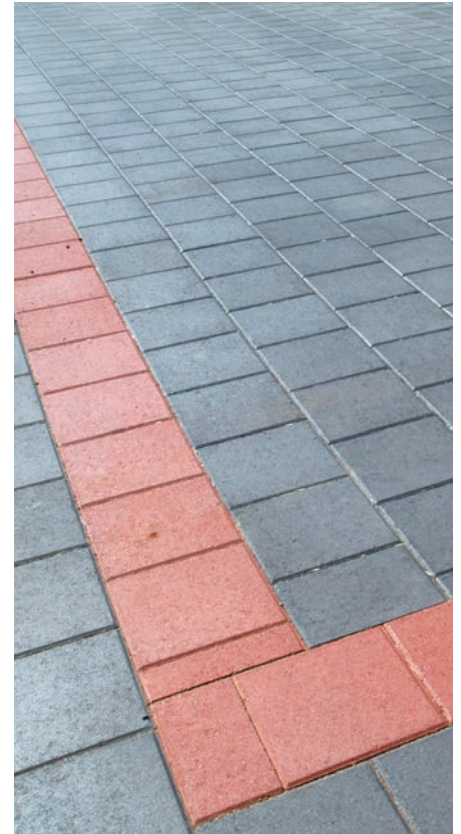
Berrima



Bushrock



Charcoal

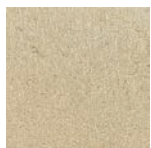


COLOURSTONE Metric Pave

Metric Range pavers are suitable for residential driveways, pedestrian footpaths, malls and minor roads

DESCRIPTION	CODE	LENGTH (mm)	WIDTH (mm)	THICK (mm)	WEIGHT (Kg)	PALLET QTY
Metric Pave	60-230	200	100	60	50	30

AVAILABLE COLOURS



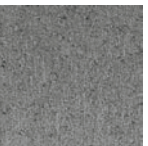
Appin Stone



Berrima



Bushrock



Charcoal



SEALING PRODUCTS

We have a great range of sealing products from leading companies such as Drytreat, Environex and SRW for your pavers, retaining walls and natural stone to keep it looking as good as new.

WHY SEAL STONE OR TILES?

Natural stone and tiles are porous by nature. If you want to protect your investment, we highly recommend sealing. Sealing prevents and reduces dis-colouration and staining that will occur overtime.



DRYTREAT
Excellence in sealing products™

WORLD LEADING SEALERS FOR THE
PROTECTION OF NATURAL STONE, TILES,
PAVERS, CONCRETE, BRICKS AND GROUT.



SRW[®]
PRODUCTS

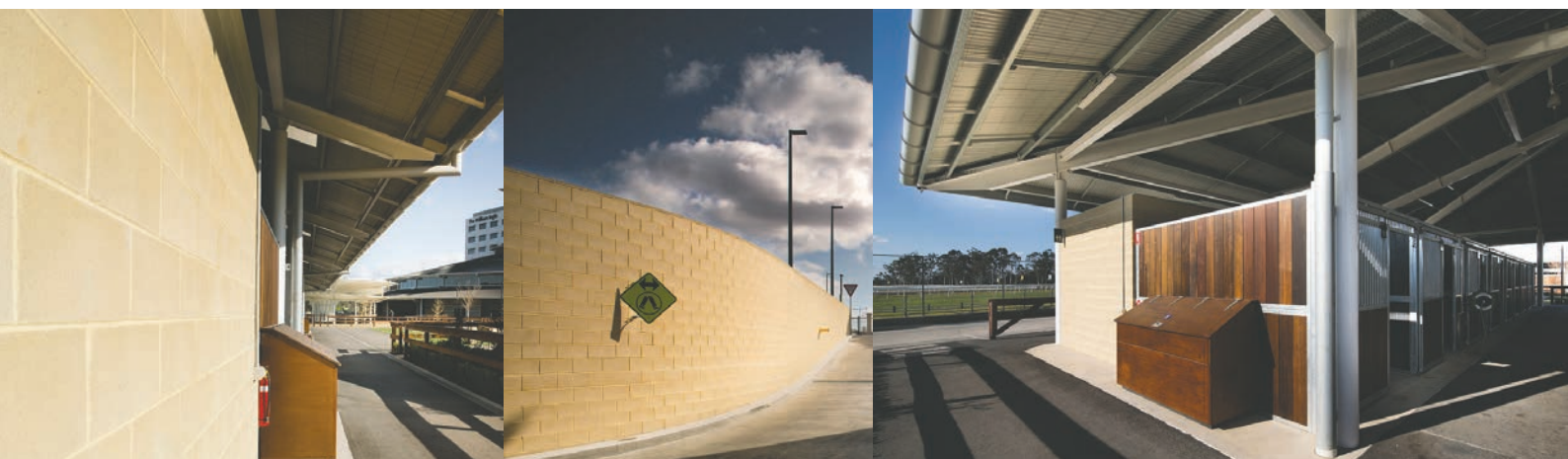
solid solutions to better hardscapes

Sealers

CONTACT US FOR MORE DETAILS



Split and smoothface block wall in Opal White



Smoothface block wall in Appin Stone

SPLITFACE

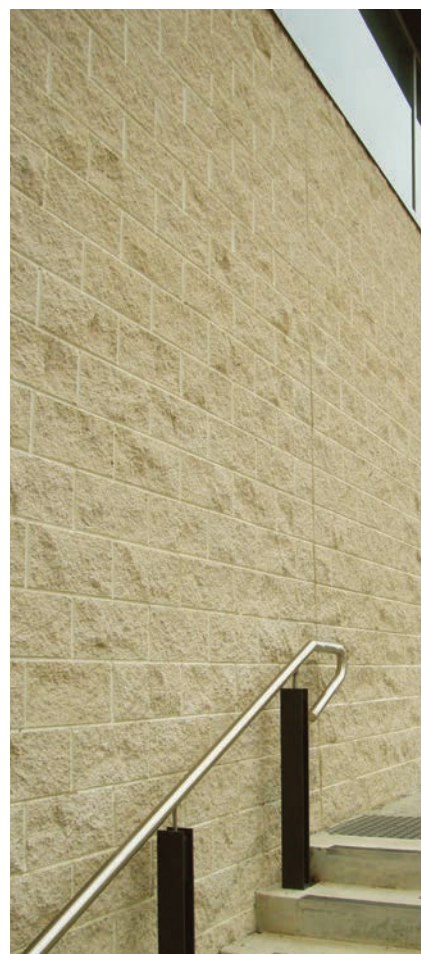
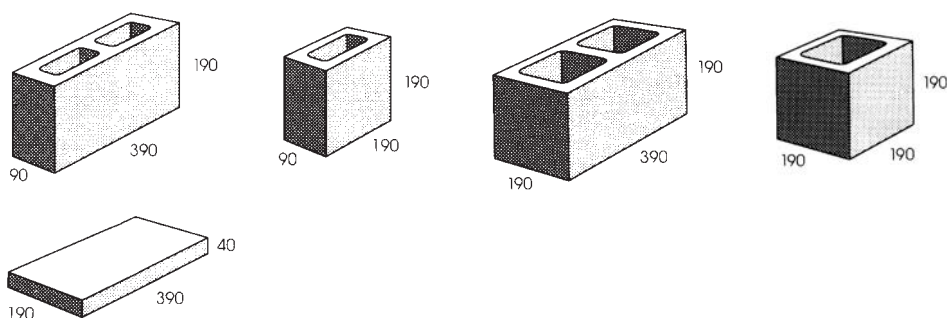
This quality, near vertical retaining wall system is a great do it yourself solution. No concrete footings are needed and they are flexible. You can achieve anything from 90° corners, steps, straight and even curved walls.

DESCRIPTION	CODE	LENGTH (mm)	WIDTH (mm)	HEIGHT (mm)	QTY	PALLET QTY
100 Split Face Block	10-121	390	90	190	14 /m ²	144
100 Split Face Half Block	10-123	190	90	190	28/m ²	288
200 Split Face Block	20-121	390	190	190	14 /m ²	90
200 Split Face Half Block	20-123	190	190	190	28/m ²	180
200 Coloured Caping	50-31	390	195	40	5 /m	288

AVAILABLE COLOURS



Opal White Appin Stone Penrose Oakdale Bushrock Charcoal Yellow Rock Red Rock

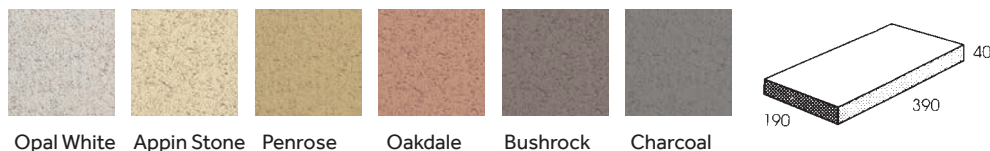


SMOOTHFACE

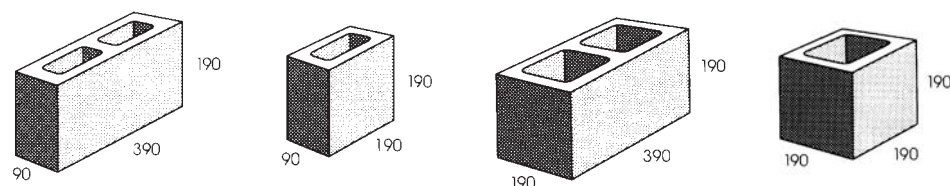
This quality, near vertical retaining wall system is a great do it yourself solution. No concrete footings are needed and they are flexible. You can achieve anything from 90° corners, steps, straight and even curved walls.

DESCRIPTION	CODE	LENGTH (mm)	WIDTH (mm)	HEIGHT (mm)	QTY	PALLET QTY
100 Split Face Block	10-121	390	90	190	14 /m ²	144
100 Split Face Half Block	10-123	190	90	190	28/m ²	288
200 Split Face Block	20-121	390	190	190	14 /m ²	90
200 Split Face Half Block	20-123	190	190	190	28/m ²	180
200 Coloured Caping	50-31	390	195	40	5 /m	288

AVAILABLE COLOURS



Opal White Appin Stone Penrose Oakdale Bushrock Charcoal



NATURESTONE Rock Face Blocks

Achieve the beauty of natural stone as well as the structural properties of concrete masonry blocks! Nature stone is easy to lay, easy to reinforce and cost effective.

DESCRIPTION	CODE	LENGTH (mm)	WIDTH (mm)	HEIGHT (mm)	QTY	PALLET QTY
Rock Face Full Block	CODE 20NS RF	390	220	190	13 /m ²	75
Rock Face Half Block	CODE 20NS RF 1/2	190	220	190		
Rock Face Full Corner	CODE 20NS RF CNR	420	220	190		
Rock Face Half Corner	CODE 20NS RF 1/2CNR	220	220	190	2.5 /m	120
Cap Rock Face	CODE NS CAP RF	400	260	60	5 /m	300
Corner Cap Rock Face	CODE NS CNR CAP RF	400	260	60		

note: natural stone can have a variance of +/- 10mm



NatureStone
Rock Face Full Block



NatureStone
Rock Face Half Block



NatureStone
Rock Face Full Corner



NatureStone
Rock Face Half Corner



NatureStone
Cap Rock Face



NatureStone
Corner Cap Rock Face



NATURESTONE Honed Blocks

Achieve the beauty of natural stone as well as the structural properties of concrete masonry blocks! Nature stone is easy to lay, easy to reinforce and cost effective.

DESCRIPTION	CODE	LENGTH (mm)	WIDTH (mm)	HEIGHT (mm)	QTY	PALLET QTY
Honed Full Block	CODE 20NS H	390	220	190	13 /m ²	75
Honed Half Block	CODE 20NS H1/2	190	220	190		
Honed Full Corner	CODE 20NS H CNR	420	220	190		
Honed Half Corner	CODE 20NS H 1/2CNR	220	220	190	2.5 /m	120
Cap Honed Face	CODE NS CAP H	400	260	60	5 /m	300
Corner Cap Honed	CODE NS CNR CAP H	400	260	60		

note: natural stone can have a variance of +/- 10mm



NatureStone
Rock Face Full Block



NatureStone
Rock Face Half Block



NatureStone
Rock Face Full Corner



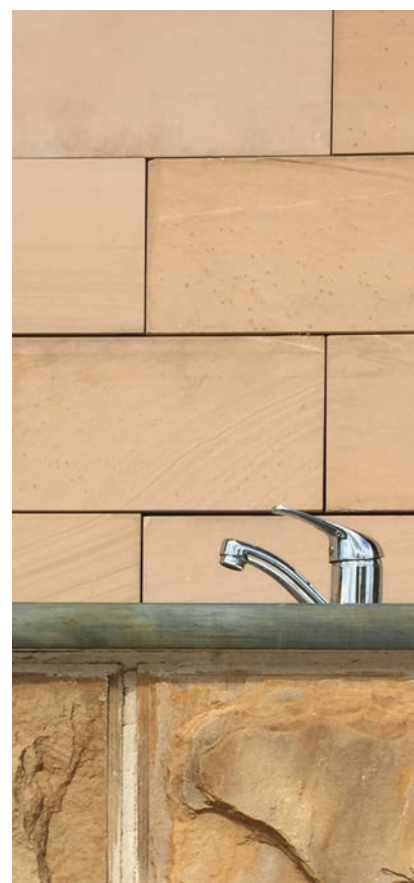
NatureStone
Rock Face Half Corner



NatureStone
Cap Rock Face



NatureStone
Corner Cap Rock Face



STONEFACE Stone Face Blocks

StoneFace™ is a new concept in architectural masonry developed by Baines Masonry. This is a reconstituted stone finish inspired by our unique Australian landscape, both rugged and stunning, and comes in four finishes. .



BushRock Blend



Charcoal Blend



YellowRock Blend



OpalRock Blend

StoneFace™ full blocks come in 6 profiles

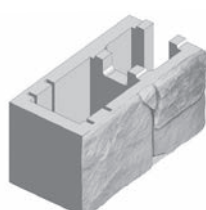


DESCRIPTION	CODE	LENGTH (mm)	WIDTH (mm)	HEIGHT (mm)
StoneFace Standard Full Block	LB/SF 20-91	398	230	198
StoneFace Full End Block Single Face	LB/SF 20-92	390	230	198
StoneFace Double Face Full End Corner	LB/SFD 20-92	420	230	198
StoneFace Double Face Finger End Corner	LB/SFDF 20-92	420	230	198
StoneFace Half End Block Single Face	LB/SF 20-93	190	230	198
StoneFace Half Double Face End Corner	LB/SFD 20-93	190	230	198
StoneFace Half Double Face Finger End Corner	LB/SFDF 20-93	190	230	198
StoneFace Capping	SF CAPPING	500	300	40

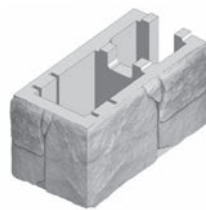
note: StoneFace can have a variance of +/- 10mm



StoneFace
Standard Full Block -1 Face



StoneFace
Full End Block -1 Face



StoneFace
Full Corner -1 Face + 1 End



StoneFace
Half End Block-1 Face

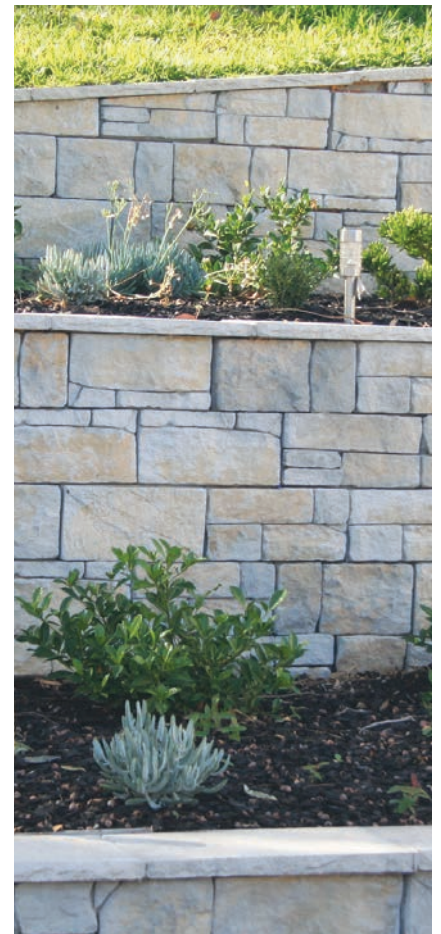


StoneFace
Half Corner-1 Face + 1 End



StoneFace
Cap Stone -1 Face

Note: Full Corners and Half Corners are universal. No right hand and left hand corners required.



ASK US! STONEFACE Veneer options also available

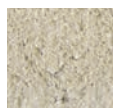
GARDEN EDGE

Metric Range pavers are suitable for residential driveways, pedestrian footpaths, malls and minor roads

DESCRIPTION	CODE	LENGTH (mm)	WIDTH (mm)	THICK (mm)	WEIGHT (Kg)	PALLET QTY
Garden Edge 1		366	190	70		
Garden Edge 2		390	90	90		
Garden Edge 3	60-230	200	100	60	50	30

Garden Edge 1

AVAILABLE COLOURS

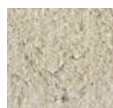


Appin Stone

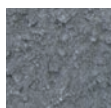


Charcoal

Garden Edge 2



Appin Stone



Charcoal

Garden Edge 3



Bushrock



Charcoal



Appin Stone



Berrima

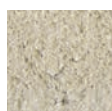


GARDENSTONE

This easy to use, do it yourself garden edging is flexible for straight and curved borders. They come double faced. No concrete is required and only weighs 8kg per block

DESCRIPTION	CODE	LENGTH (mm)	WIDTH (mm)	HEIGHT (mm)	QTY	PALLET QTY
Appin Stone cap	GSAFASCap	244	195	120	35/m ²	180
Appin Stone Block	GSABASBlock	244	195	120	4.2 /m	180
Charcoal Cap	GSAFCCCap	244	195	120	35/m ²	180
Charcoal Block	CharCoal Block	244	195	120	4.2 /m	180

AVAILABLE COLOURS



Appin Stone



Charcoal



Gardenstone Block



Gardenstone Capping Block



SLEEPERS Trojanstone Plain

Trojanstone sleepers are manufactured from high strength concrete and reinforced steel. This easy to install system uses steel posts, a combination of 'H' section and channels to build any wall. Sleepers can be cut to any length.

DESCRIPTION	CODE	LENGTH (mm)	WIDTH (mm)	HEIGHT (mm)	WEIGHT (Kg)	PALLET QTY
Trojanstone Plain	12-101	1800	60	200	50	30

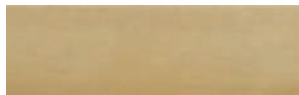
AVAILABLE COLOURS



Mist



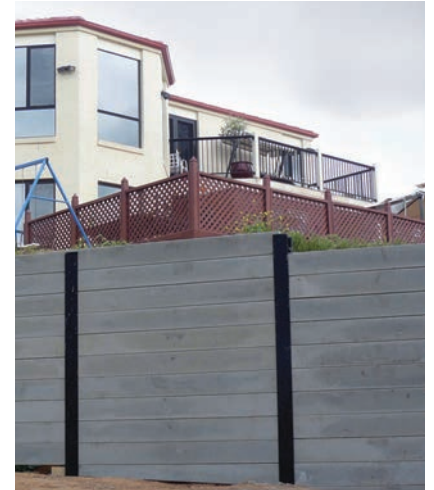
Mocha



Oatmeal



Ebony



SLEEPERS Trojanstone Timber-tex

Trojanstone sleepers are manufactured from high strength concrete and reinforced steel. This easy to install system uses steel posts, a combination of 'H' section and channels to build any wall. Sleepers can be cut to any length.

DESCRIPTION	CODE	LENGTH (mm)	WIDTH (mm)	HEIGHT (mm)	WEIGHT (Kg)	PALLET QTY
Trojanstone Timber-tex	12-101	1800	60	200	50	30

AVAILABLE COLOURS



Ghost Gum



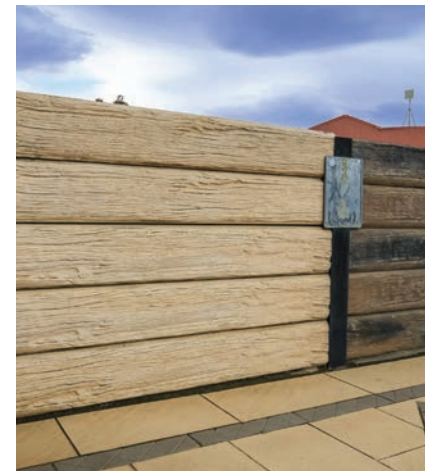
Redgum



Mountain Ash



Charcoal Blaze



SLEEPERS Trojanstone Rock-tex

Trojanstone sleepers are manufactured from high strength concrete and reinforced steel. This easy to install system uses steel posts, a combination of 'H' section and channels to build any wall. Sleepers can be cut to any length.

DESCRIPTION	CODE	LENGTH (mm)	WIDTH (mm)	HEIGHT (mm)	WEIGHT (Kg)	PALLET QTY
Trojanstone Rock-tex	12-101	1800	60	200	50	30

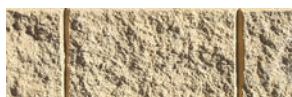
AVAILABLE COLOURS



Mist



Sandstone



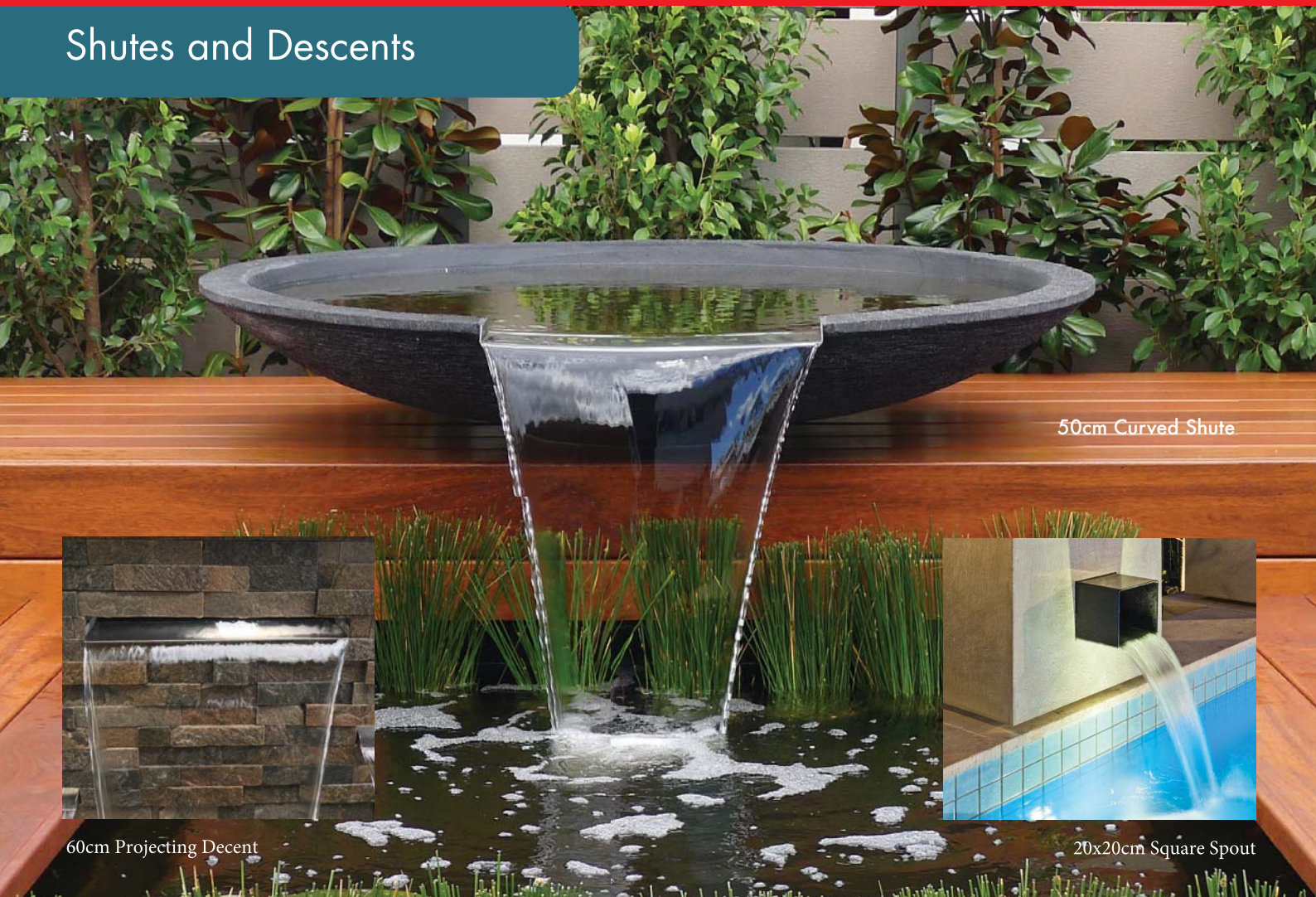
Oatmeal



Bluestone



Shutes and Descents



50cm Curved Shute



60cm Projecting Decent



20x20cm Square Spout



15cm Square Shute



15cm Square Shute



15cm Square Shute



50cm Curved Shute



20cm Curved Shute



Wall Features

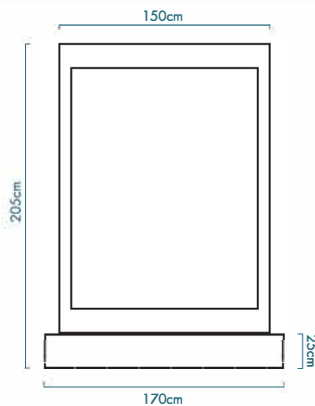
Hand crafted from volcanic stone any wall can be designed to your specifications. All wall packages include: stone base, pump, mesh, pebbles (black or white)
Stainless steel lighting is additional & very highly recommended, this creates an amazing abundance.



Size and Price

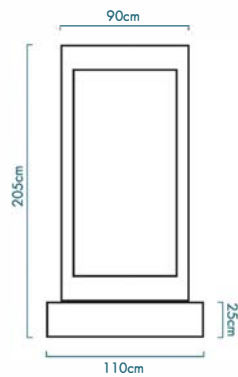
Large

\$4200



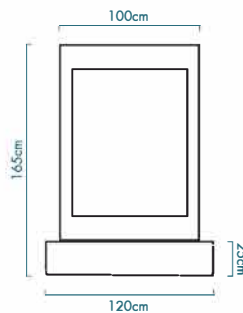
Medium

\$2900



Small

\$2500



Pond Base

Depth is the same for all walls



Stone, Copper or Stainless Steel Materials



Black & Shiny Triangles



Black Squares



Bocci Balls



Circles Out



Citylife



Dandelion



Shiny Abstract



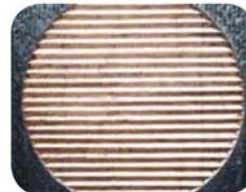
Black Louver



Shiny Louver



Stainless Steel



Sunset



Tulip



Cherry Blossom



Grapevine



Shiny Squares

solid base for walls/towers is preferred: concrete slab should be 80mm (deep) or levelled solid crushed rock base with pavers

Tower Water Features

Hand crafted from volcanic stone any copper insert or stainless steel tower can be designed to your specifications.
Stainless steel lighting is additional and highly recommended as it creates an amazing ambience.



Copper Insert Variety

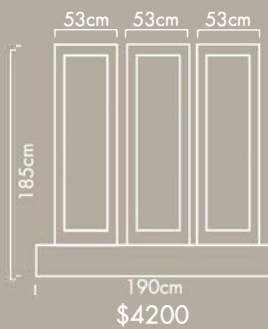
Single Tower



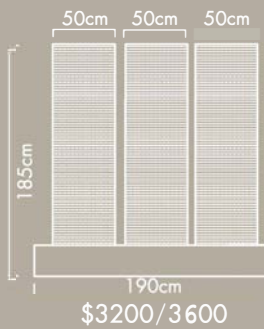
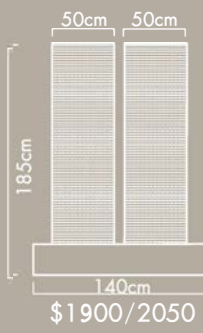
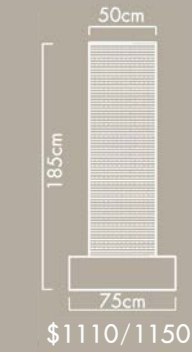
Twin Tower



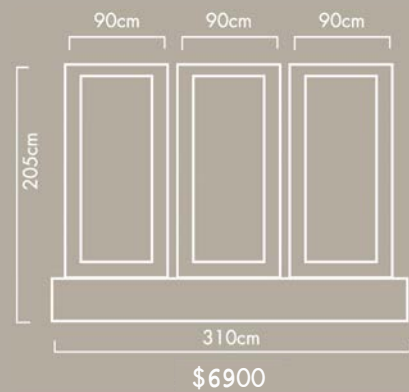
Triple Tower



Texture & Grind Stone



Giant Triple Tower



Styles and Textures



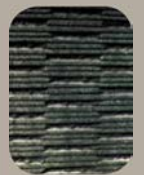
Bamboo



Black Louver
Shiny Bands



Cherry Blossom



Grind



Maze



Tree of Life



Sunray



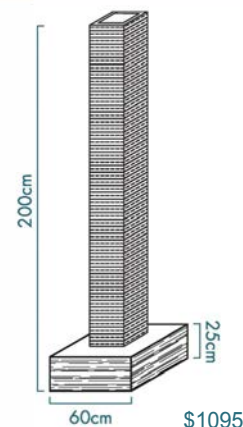
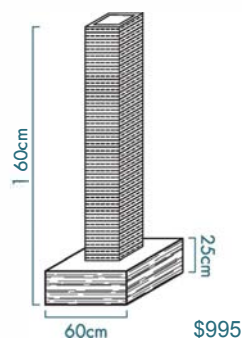
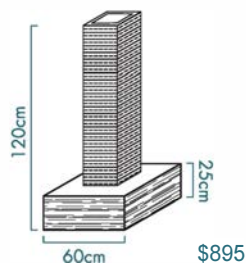
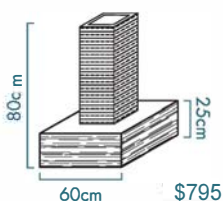
Texture

*solid base for walls/towers is preferred:
concrete slab should be 80mm (deep)
or levelled solid crushed rock base with pavers

All tower packages include: stone base, pump, mesh, pebbles.

Square Grind Column

Includes base, grate, pebbles, pump, and column.



Rain Showers \$7,200

The ultimate centrepiece. The Rain Shower stands at an impressive 2 metres tall and creates a curtain of water wall between it's frame.

Complete with, pond, grates, pump, 2 x lights, transformer, pebbles. The flow of the pump can be adjusted for full flow curtain or tranquil dripping. This is the pinnacle of water features. Available in copper or stainless steel this item can be custom built for specific sizes.



Sculptural Features

Modern and contemporary, these statues would look magnificent in any home and can be utilised for both indoor and outdoor use.



Statues start from \$219

Standing at 1m or 1.5m tall, these statues are available with different finishes from Greystone, Black Terrazzo and White Terrazzo.

Our unique and contemporary teak & stone collections include wall hangings, and artistically designed spherical balls available in sizes that start from 30cm to 100cm.



Stone Water Packages

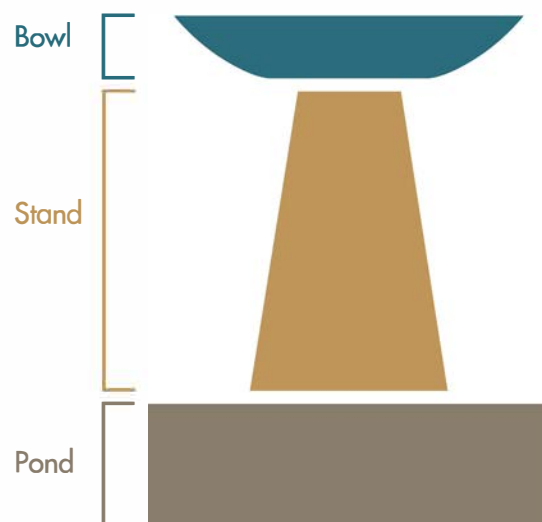
Our water packages come in a huge range of styles. Any of the pots or bowls can be converted into an overflowing water feature or a bubbler feature. Call us for advice



Customising your own water feature

We can provide custom fibreglass ponds to any suit any area

Stone Water features typically come as packages, but you can customise your own design. Ask our expert personnel now on 02 9679 9680



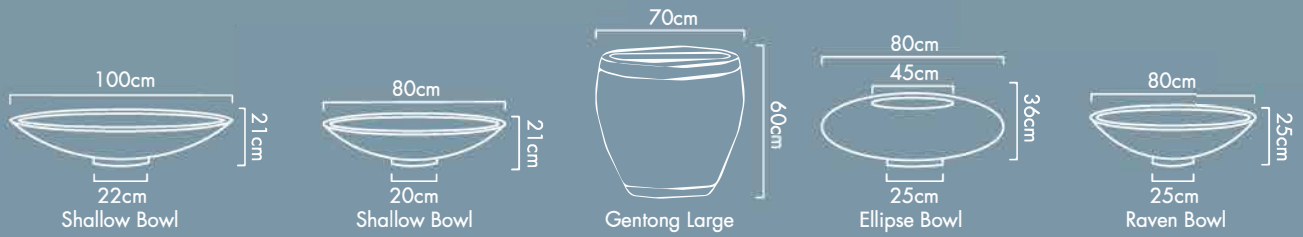
Package Water Feature Prices

XL Gentong Package	\$1,414
Large Gentong Package	\$1,264
Small Gentong Package: (poly pond/grate)	\$674
Small Gentong Package: (stone pond/grate)	\$893
1.0m (Ellipse, Raven, Water, Shallow) Bowl Package	\$1,964
80cm (Ellipse, Raven, Water, Shallow) Bowl Package	\$1,514
Tall Stand (Tapered, Round, Grove, Square) Bowl Package	\$1,883
Medium Stand (Tapered, Round, Grove, Square) Bowl Package	\$1,783
30cm Stone Ball Package	\$674
50cm Stone Ball Package	\$774
70cm Stone Ball Package	\$1,314
3 Pots Kendang Package	\$1,802
Stainless Steel Wet Edge Package	\$1,765
Dimple (Bronze/Black) Jar Package	\$1,354
Ginger (Bronze/Black) Jar Package	\$1,354
Saffron (Ancient Rust) Jar Package	\$1,354
Cinnamon (Ancient Rust) Jar Package	\$1,634

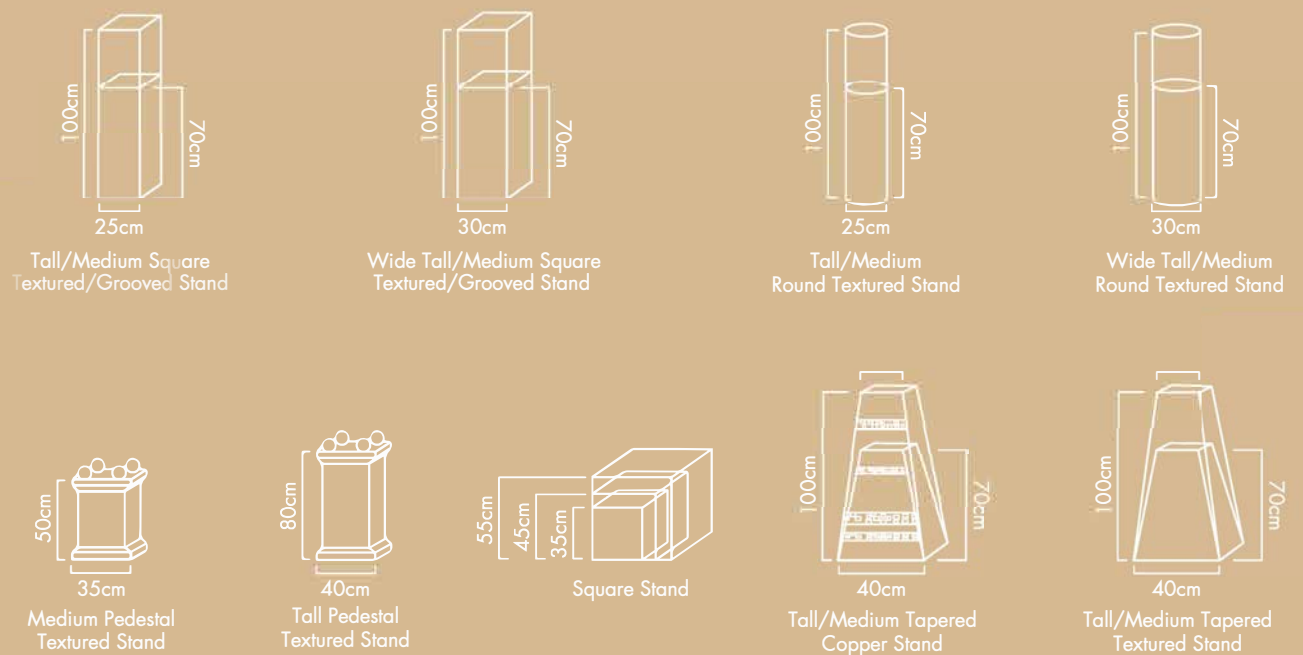
packages inc polypond, grate, pump, pebbles.

Stone Water Components

Bowls



Stands



Ponds





Ellipse Bowl



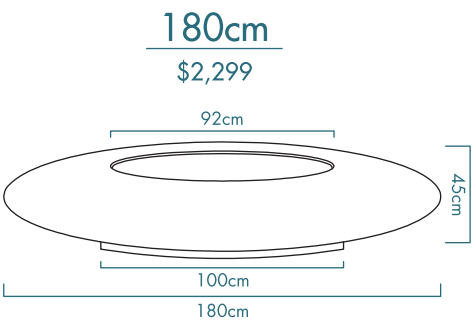
Shallow Bowl



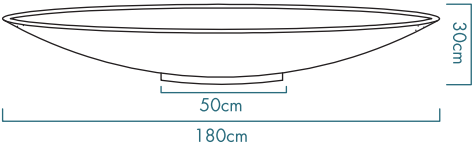
Raven Bowl

Architectural Bowls

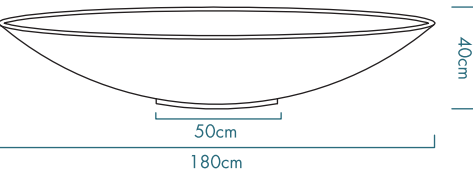
Ellipse Bowl



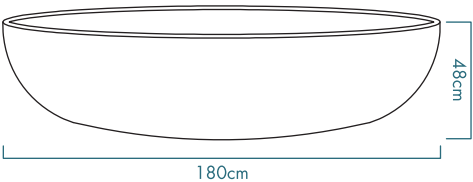
Shallow Bowl



Raven Bowl



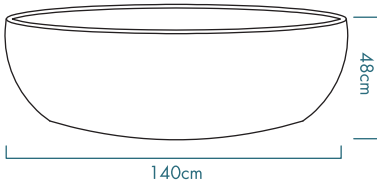
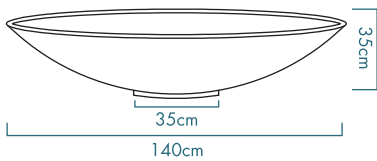
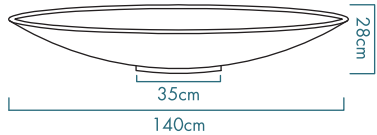
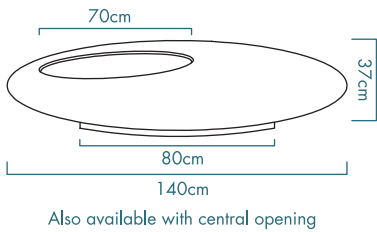
Water Bowl



Oval Water Bowl

*All bowls on this page can be converted into bubbler's as shown in image 3 & 4 above

140cm
\$1,799





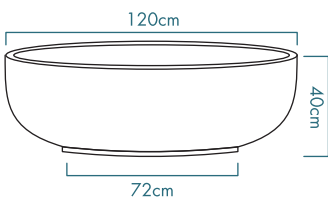
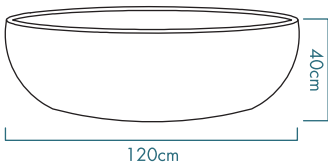
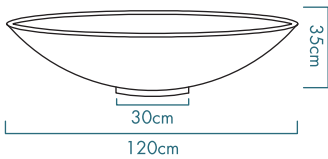
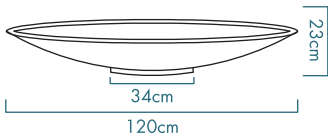
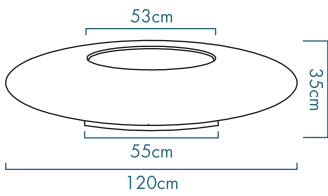
Water Bowl



Oval Water Bowl

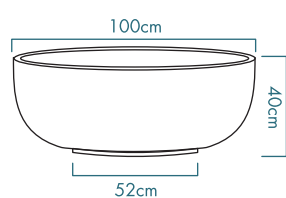
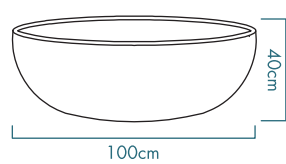
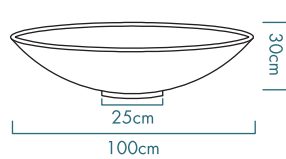
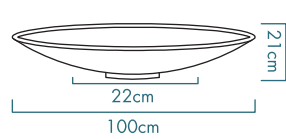
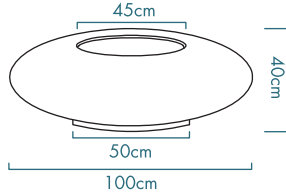
120cm

\$1,199



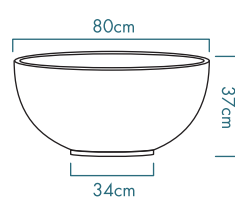
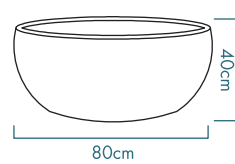
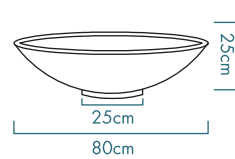
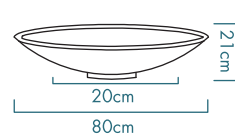
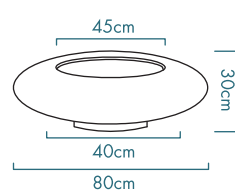
100cm

\$799



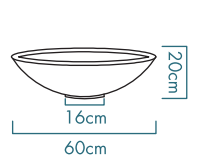
80cm

\$549






60cm

\$199



Pots and Urns

	DESCRIPTION		DIMENSIONS (CM)	\$
	Gentong Small	Stone Natural	W50xH40	99
	Gentong Medium	Stone Natural	W60xH50	199
	Gentong Large	Stone Natural	W70xH60	299
	Gentong XLarge	Stone Natural	W70xH80	499
	Gentong XXLLarge	Stone Natural	W108xH68	999
	Gentong XXXLarge	Stone Natural	W97xH97	1099
	Gentong Small	Stone Charcoal	W50xH40	99
	Gentong Medium	Stone Charcoal	W60xH50	199
	Gentong Large	Stone Charcoal	W70xH60	299
	Gentong XLarge	Stone Charcoal	W70xH80	499
	Gentong XXLLarge	Stone Charcoal	W108xH68	999
	Gentong XXXLarge	Stone Charcoal	W97xH97	1099
	Kotak Rectangular	Stone Charcoal	W80xH40xD40	249
	Kotak Medium	Stone Charcoal	W40xH50	199
	Kotak large	Stone Charcoal	W50xH60	299
	Kendang Small	Stone Charcoal	W34xH60	99
	Kendang Medium	Stone Charcoal	W34xH80	199
	Kendang Large	Stone Charcoal	W34xH100	299
	Kendang XLarge	Stone Charcoal	W34xH120	1099
	Kotak Pot Small (Black ,Grey, White)	Lite Weight	W70xH35xD30	99
	Kotak Pot Medium (Black ,Grey, White)	Lite Weight	W90xH45xD40	199
	Kotak Pot Large (Black ,Grey, White)	Lite Weight	W110xH55xD48	299
	Stone Ball Small	Stone Charcoal/Natural	30	99
	Stone Ball Medium	Stone Charcoal/Natural	50	199
	Stone Ball Large	Stone Charcoal/Natural	70	349
	Egg Chair (Black ,White)	Terrazzo	W80xL65cm	299
	Stone Bench Seat Small	Stone Charcoal	W120xH45	499
	Stone Bench Seat Medium	Stone Charcoal	W150xH45	599
	Stone Bench Seat Large	Stone Charcoal	W180xH45	699
	Firepit Small	Iron	W70xH35xD30	199
	Firepit Medium	Iron	W90xH45xD40	349
	Firepit Large	Iron	W110xH55xD48	499
	Pond Stone 60cm	Stone Charcoal	60x60x25	315
	Pond Stone 90cm	Stone Charcoal	90x90x25	400
	Pond Stone l 20cm	Stone Charcoal	l 20x l 20x25	500

DESCRIPTION			\$
	Pebbles 15 Kilo Bag	Black/Charcoal	15
	Pond light - Includes LED 4 Watt Globe	Brass	210
	Pond Light Max Built In 4.2 Watt Globe	Black	140
	Garden Spike light - Includes LED 4 Watt Globe Garden	Black	143
	Spike light - Includes LED 4 Watt Globe	Brass	143
	Many other options are available. Contact our showroom for details for prices		
	20va Transformer	Weatherproof	90
	50va Transformer	Weatherproof	100
	100va Transformer	Weatherproof	120



Gentong



Kendang



Stone Balls



Kotak



Kotak Rectangular

LASER CUT SCREENS

Our brand new range of laser cut Decorative Screens will bring style and modern luxury to any space. Whether it's a commercial or domestic project, there's a decorative screen design to suit any solution. Our screens are available in a range of 2 exciting materials & finish options including Weathered Steel (Corten) and Powder coated Aluminum. All screen designs can be customized to any size and shape and can be fabricated to allow for various fixing requirements. Customs designs are available on request.

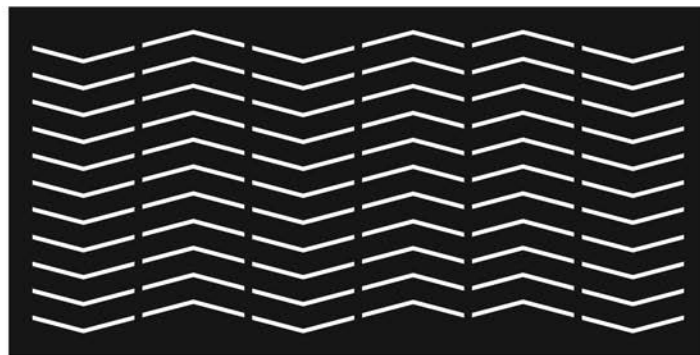
POWDERCOATED ALUMINIUM



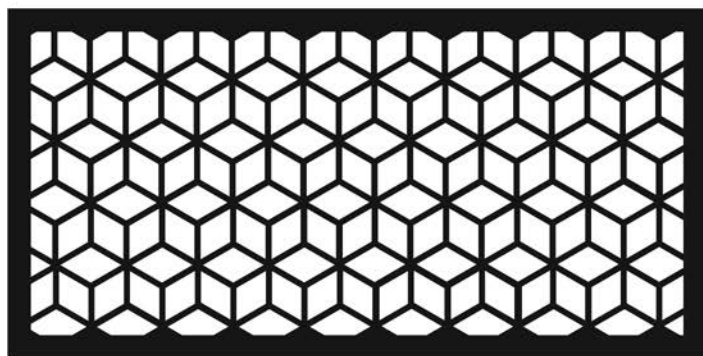
WEATHERING STEEL (CORTEN)



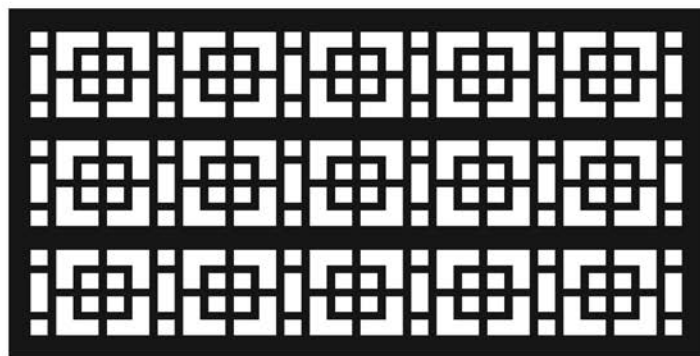
Jungle



Neo



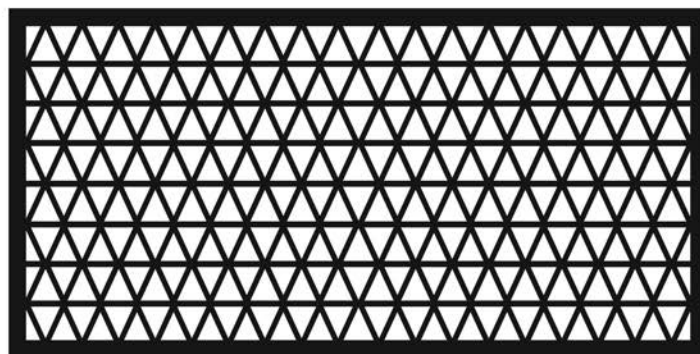
Istanbul



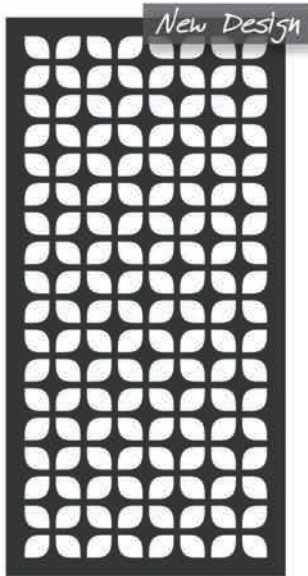
Equinox



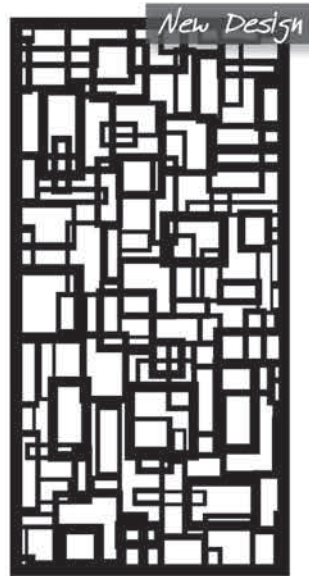
Droplets



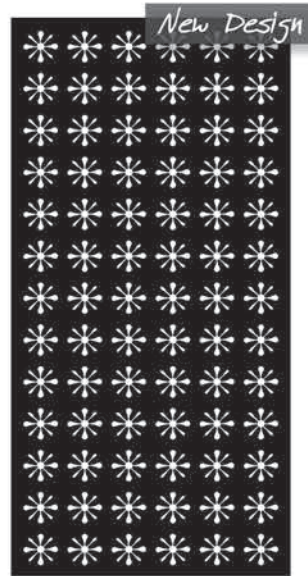
Leadlight



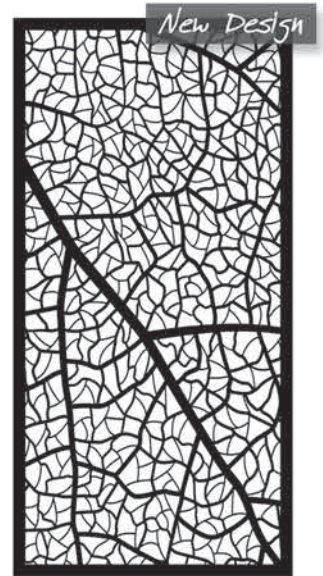
Copenhagen ≈ 45% Vis



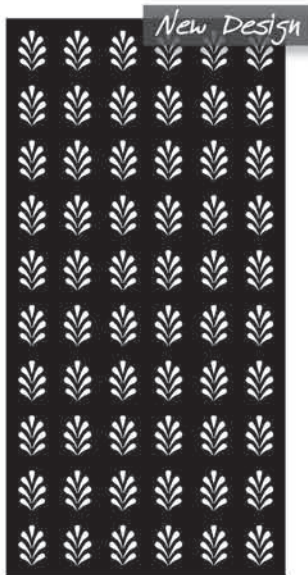
Cubism ≈ 45% Vis



Daisy ≈ 14% Vis



Leaf Vein ≈ 56% Vis



Tudor ≈ 14% Vis



Tulip ≈ 13% Vis



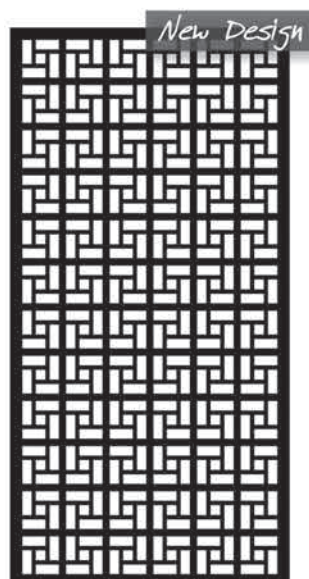
Sea Fan ≈ 30% Vis



Canopy ≈ 21% Vis



Gum Leaf ≈ 36% Vis



Bali ≈ 44% Vis



Scroll ≈ 30% Vis



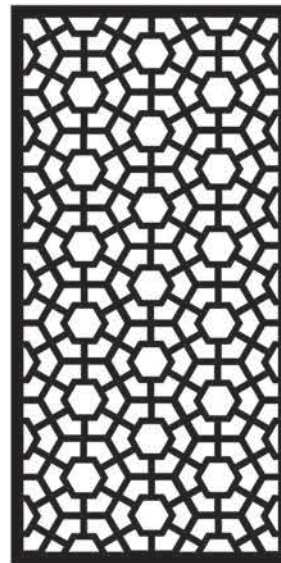
Rings ≈ 54% Vis



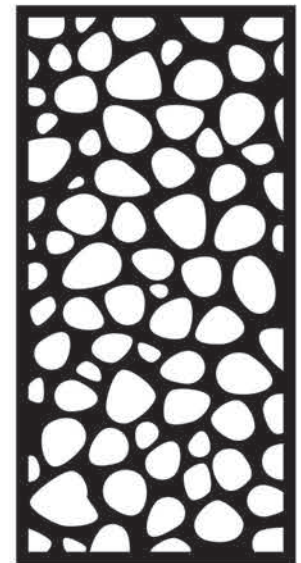
Leaf ≈ 21% Vis



Bamboo ≈ 31% Vis



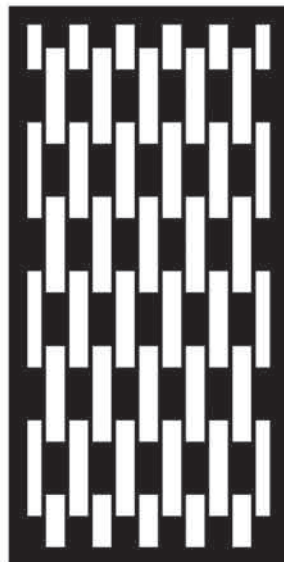
Marrakesh ≈ 48% Vis



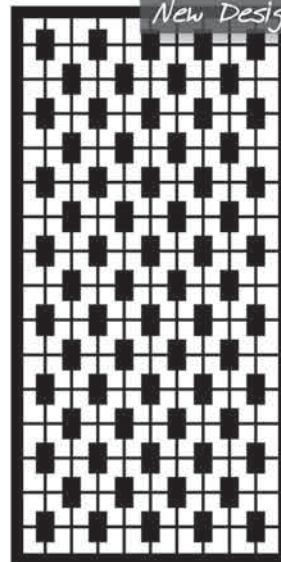
Stone ≈ 48% Vis



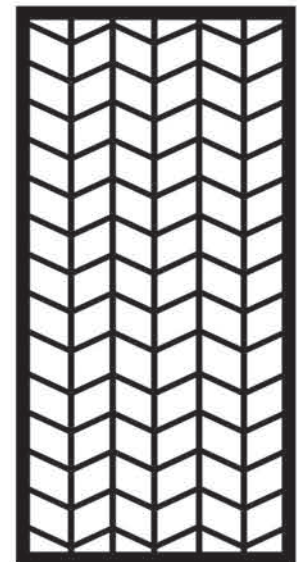
Ripple ≈ 34% Vis



Chainmail ≈ 42% Vis



Link ≈ 52% Vis



Quiver ≈ 62% Vis



Tahiti ≈ 24% Vis



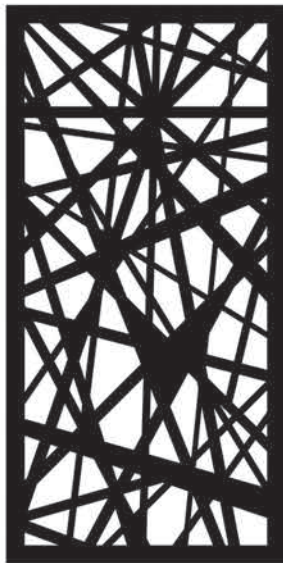
Birch ≈ 19% Vis



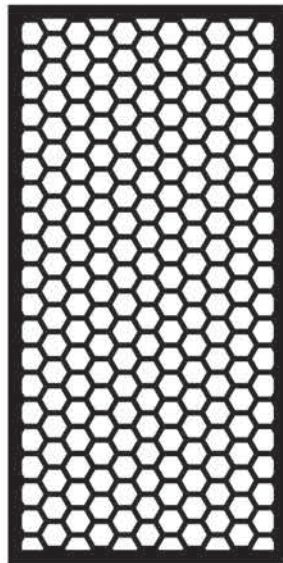
Woodgrain ≈ 24% Vis



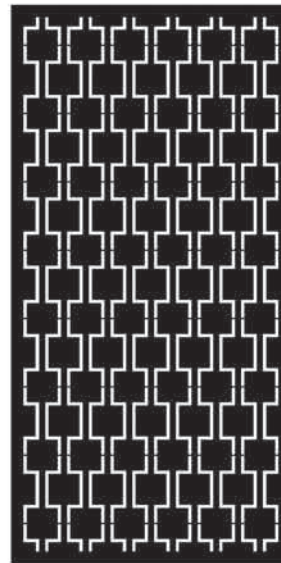
Herringbone ≈ 13% Vis



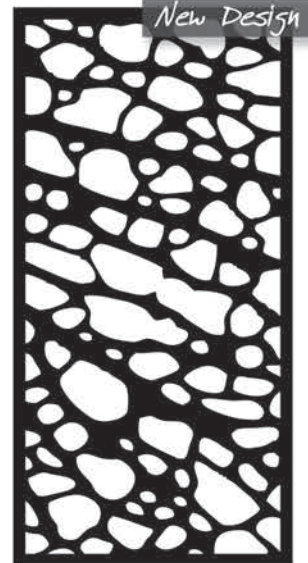
Web ≈ 37% Vis



Honeycomb ≈ 55% Vis



Gatsby ≈ 17% Vis

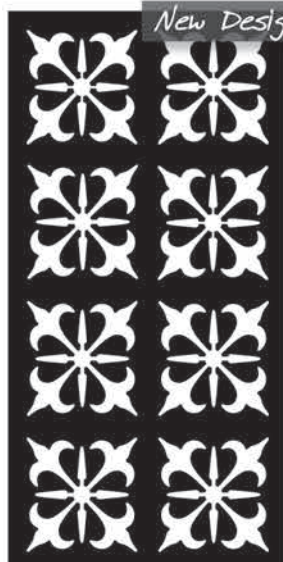


Dragonfly ≈ 37% Vis

New Design

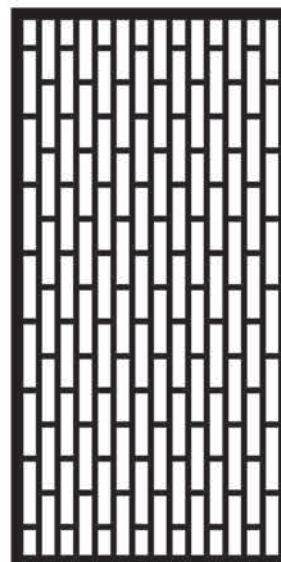


Happiness ≈ 44% Vis

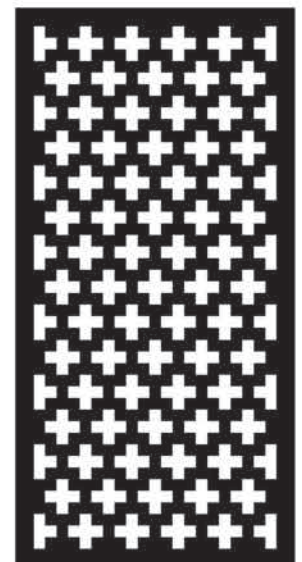


Fleuron ≈ 29% Vis

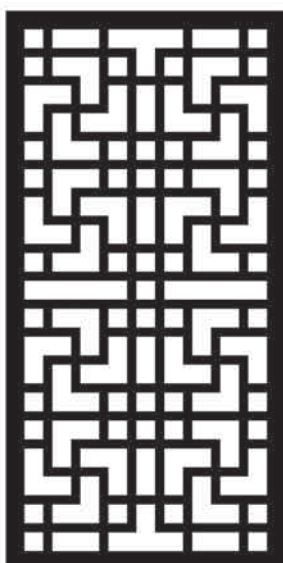
New Design



Brick Work ≈ 54% Vis



Algebra ≈ 34% Vis



Feng Shui ≈ 47% Vis



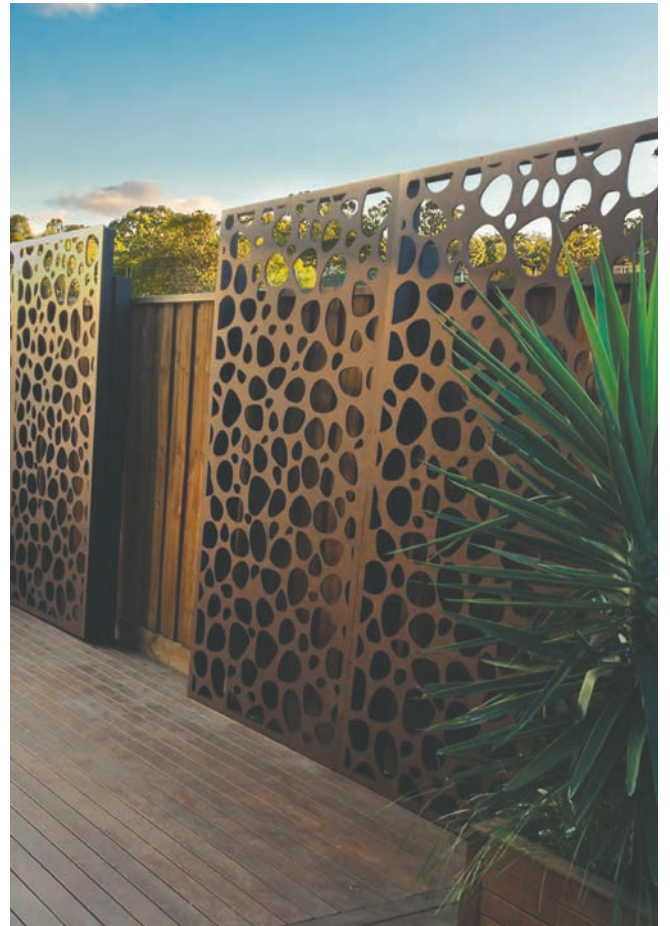
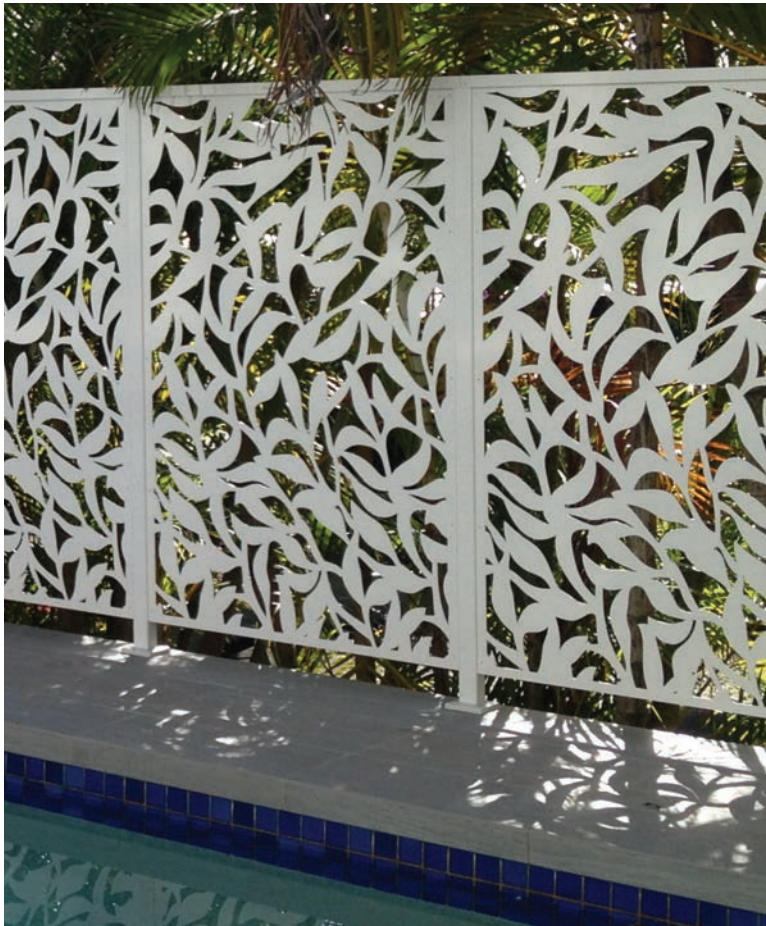
Fauna ≈ 28% Vis



Savannah ≈ 33% Vis



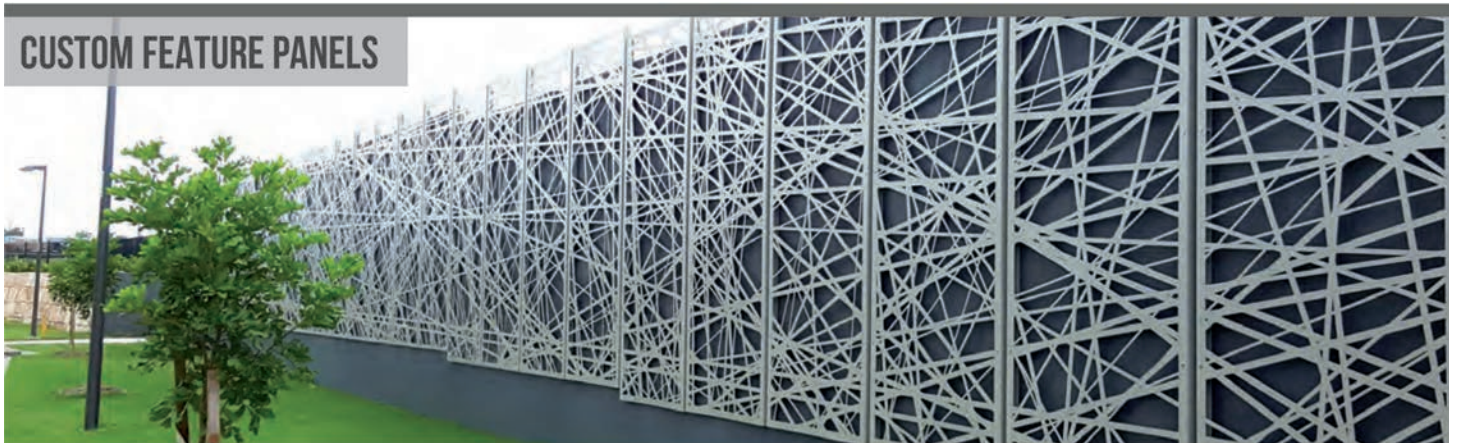
Merino ≈ 41% Vis



CUSTOM WINDOW SCREENS



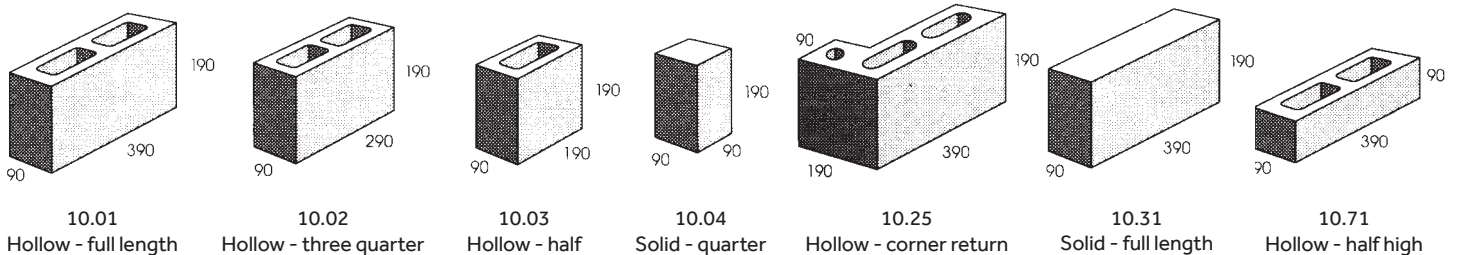
CUSTOM FEATURE PANELS



BETTA BLOCK 100mm Series

This quality, near vertical retaining wall system is a great do it yourself solution. No concrete footings are needed and they are flexible. You can achieve anything from 90° corners, steps, straight and even curved walls.

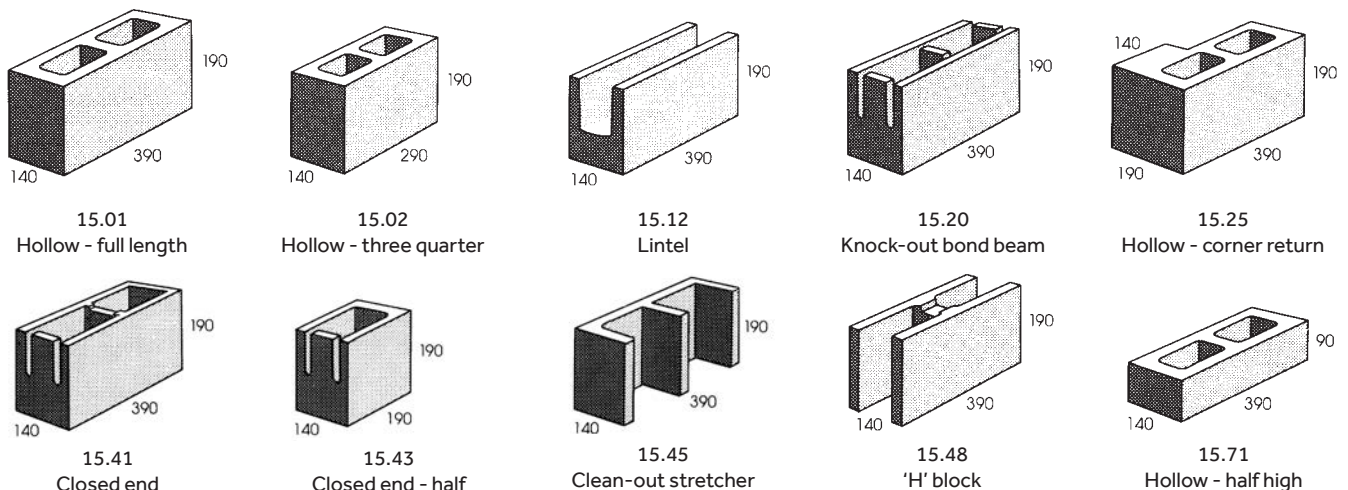
DESCRIPTION	CODE	LENGTH (mm)	WIDTH (mm)	HEIGHT (mm)	QTY	PALLET QTY
100 Standard Block	10-01 BB	390	90	190		216
100 3/4 Block	10-02	290	90	190		240
100 1/2 Block	10-03 BB	190	90	190		432
100 1/4 Block	10-04	90	90	190		720
100 Corner Return	10-25	390	90	190		120
100 Solid	10-31 BB	390	90	190		180
100 half high	10-71 BB	390	90	90		180



BETTA BLOCK 150mm Series

This quality, near vertical retaining wall system is a great do it yourself solution. No concrete footings are needed and they are flexible. You can achieve anything from 90° corners, steps, straight and even curved walls.

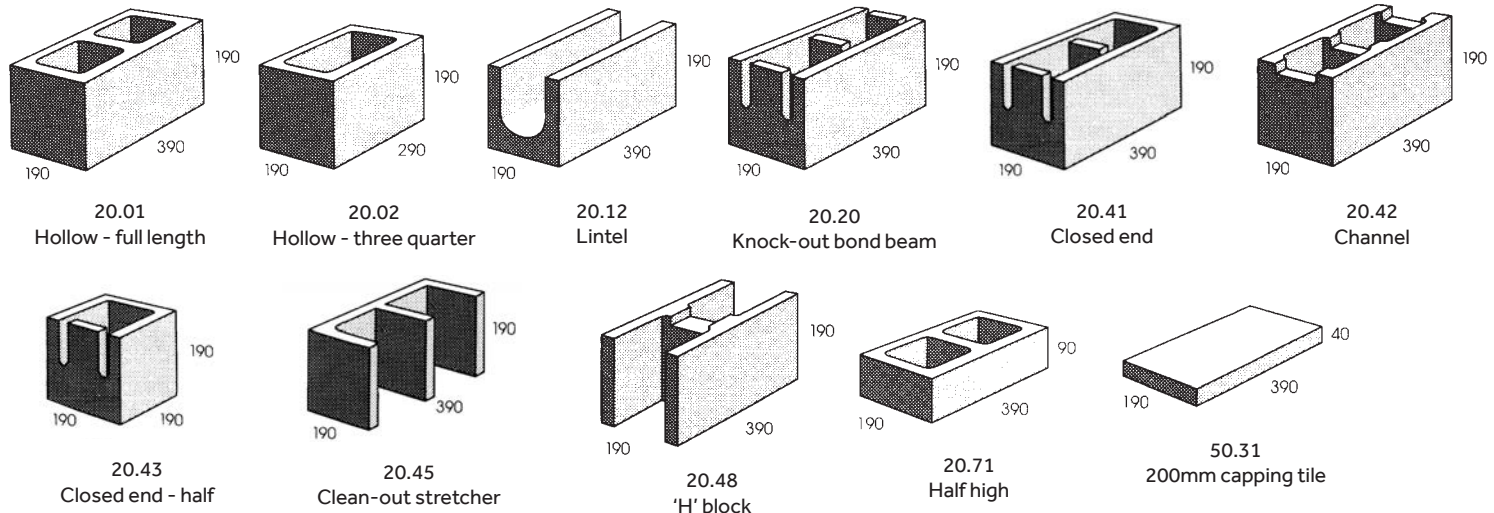
DESCRIPTION	CODE	LENGTH (mm)	WIDTH (mm)	HEIGHT (mm)	QTY	PALLET QTY
150 Standard Block	15-01 BB	390	140	190		144
150 3/4 Block	15-02 BB	290	140	190		160
150 Lintel Block	15-12	390	140	190		120
150 Knockout Bond Beam	15-20 BB	390	140	190		144
150 Corner Return	15-25	390	140	190		105
150 Stop End	15-41 BB	390	140	190		144
150 1/2 block	15-43 BB	190	140	190		216
150 Cleanout	15-45 BB	390	140	190		144
150 H block	15-48 BB	390	140	190		144
150 1/2 half high	15-71 BB	390	140	90		288



BETTA BLOCK 200mm Series

This quality, near vertical retaining wall system is a great do it yourself solution. No concrete footings are needed and they are flexible. You can achieve anything from 90° corners, steps, straight and even curved walls.

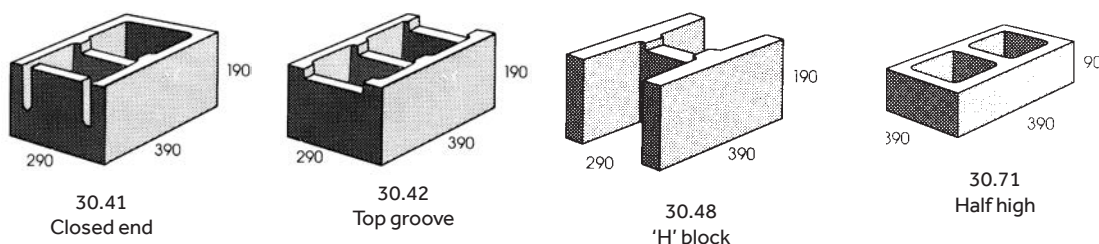
DESCRIPTION	CODE	LENGTH (mm)	WIDTH (mm)	HEIGHT (mm)	QTY	PALLET QTY
200 Standard Block	20-01 BB	390	190	190		108
200 3/4 Block	20-02 BB	290	190	190		144
200 Lintel Block	20-12	390	190	190		90
200 Knockout Bond Beam	20-20 BB	390	190	190		108
200 Stop End Block	20-41 BB	390	190	190		108
200 Top Groove Block	20-42 BB	390	190	190		108
200 1/2 Stop End Block	20-43 BB	190	190	190		216
200 Cleanout	20-45 BB	390	190	190		108
200 H block	20-48 BB	390	190	190		108
200 Half High	20-71 BB	390	190	90		216
200 Capping Block	50-31 NAT	390	195	40		288



BETTA BLOCK 300mm Series

This quality, near vertical retaining wall system is a great do it yourself solution. No concrete footings are needed and they are flexible. You can achieve anything from 90° corners, steps, straight and even curved walls.

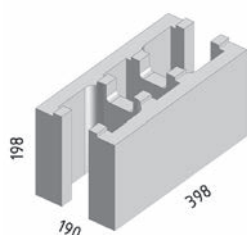
DESCRIPTION	CODE	LENGTH (mm)	WIDTH (mm)	HEIGHT (mm)	QTY	PALLET QTY
300 Stop End Block	30-41 BB	390	290	190		72
300 Top Groove Block	30-42 BB	390	290	190		72
300 H block	30-48 BB	390	290	190		72
300 Half High	30-71 BB	390	290	90		144



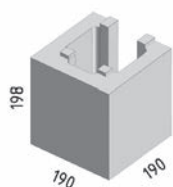
LOCKBLOCK

This is a lightweight, do it yourself, alternative to concrete blocks. Each Lockblock has self locating connectors making them easy to lay. Perfect for retaining walls, fences and privacy walls. Use with SRW Adhesive.

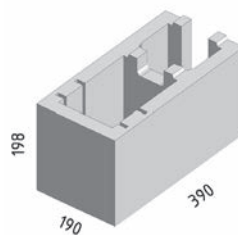
DESCRIPTION	CODE	LENGTH (mm)	WIDTH (mm)	HEIGHT (mm)	QTY	PALLET QTY
Lock Block Double U	LB 20-91	398	190	198	12.5 /m ²	90
Lock Block End/Corner	LB 20-92	390	190	198		90
Lock Block Half	LB 20-93	190	190	198	25 /m ²	180



Lock Block Double U



Lock Block Half



Lock Block End/Corner



SRW ADHESIVE

Build your walls with SRW Adhesive instead of mortar and you'll save TIME & MONEY. SRW Adhesive is a rapid-set polyurethane adhesive formulated to permanently bond concrete masonry block structures.

DESCRIPTION	CODE	SIZE
SRW - ADHESIVE	SRW - ADH 10	10 oz
SRW - ADHESIVE	SRW - ADH 29	29 oz



- ✓ Fastest set-up time on the market!
- ✓ High temperature adhesive suitable for firepits
- ✓ For use on dry or damp surfaces
- ✓ Premium, long lasting strength
- ✓ Interior/exterior use
- ✓ Specially formulated for use on construction and landscape projects





Masonry & Slate

visit our showroom for more...

www.masonryandslate.com.au | 98 Richmond Rd, Blacktown | PH 02 9679 9680